

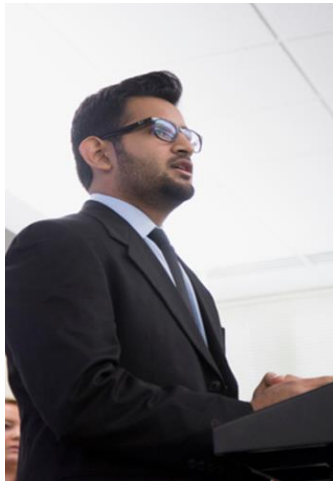
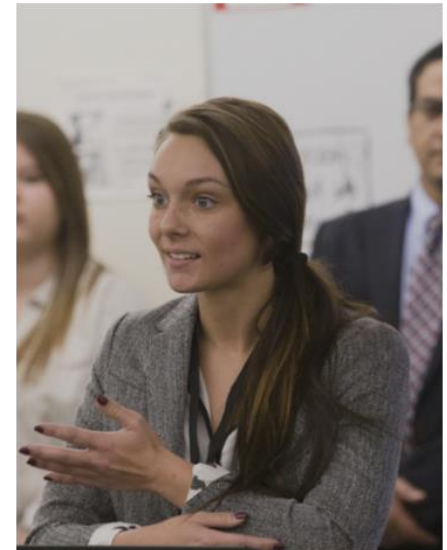


Dr. James Caldwell  
Professor of Management



# Graduate Business Studies

Harrison College of Business and Computing



# Harrison College of Business and Computing



## Accreditation

AACSB = Top 5%  
Business Schools  
in the World



**SOUTHEAST MISSOURI**  
STATE UNIVERSITY · 1873

# MBA (Traditional)

Accreditations



Nationally Recognized

- Princeton Review (2020) – Recognized as one of the top 3 MBA's in Missouri

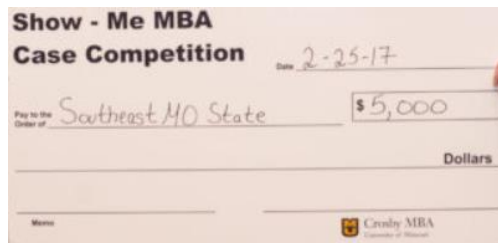
- Southeast Missouri State University - Harrison College of Business
- University of Missouri – Columbia – Trulaske College of Business
- Washington University in St. Louis - John M. Olin School of Business



- US News and World Report (2018) top schools in US

- Washington University in St. Louis – Olin Business School #23
- University of Missouri - Trulaske College of Business #59

- MBA Case Competition #1 in Missouri



**SOUTHEAST MISSOURI**  
STATE UNIVERSITY • 1873

# MBA (Online)

## Organizational Partnerships – Southeast Online

### Accreditations



### Nationally Recognized

- Princeton Review – Recognized as a quality program
- US News and World Report (2018)
  - Nation's Best Online Programs
  - #2 in Missouri, #85 in US
- GetEducated.com (2018) - ranked #5 "Best Buy" among AACSB online MBA programs in the country. Ranks online universities for cost, quality, and credibility.
- Affordable Colleges Online - among the nation's top 50 programs by Affordable Colleges Online
  - #37



**SOUTHEAST MISSOURI**  
STATE UNIVERSITY • 1873

# INVOLVEMENT

**YOU WON'T  
BE DOING  
IT ALONE!**

## **STUDENT ASSOCIATIONS**

- / African**
- / Bangladeshi**
- / Brazilian**
- / Chinese Students & Scholars**
- / Filipino**
- / Indian Subcontinent**
- / International (ISA)**
- / Japanese**
- / Korean**
- / Nepalese**
- / Sri Lankan**



**JOIN A FRATERNITY OR SORORITY**



**HOMECOMING PARADE**

---

Over **500** international  
students from more  
than **52** countries

---

# Why Southeast?

- Accreditations – Quest for Excellence
- International Focus – 500 + International Students
- Personalized Attention from Highly Trained Faculty
- Innovative Curriculum – Experiential Learning (Fin/Cyber)
- Flexible Learning – Supplement with Online, Same Faculty
- Networking Opportunities – Big Fish in A Little Pond
- Involvement – Student Organizations
- Clean Transition into Graduate School
- Quality and Value



[We are one Southeast Video](#)

[International Student Video](#)

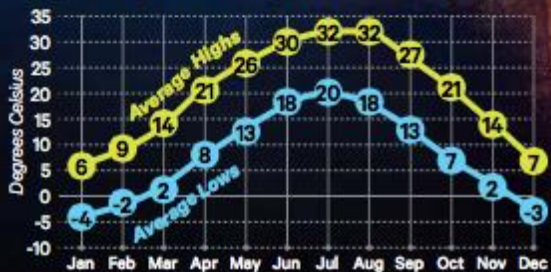


# OUR COMMUNITY

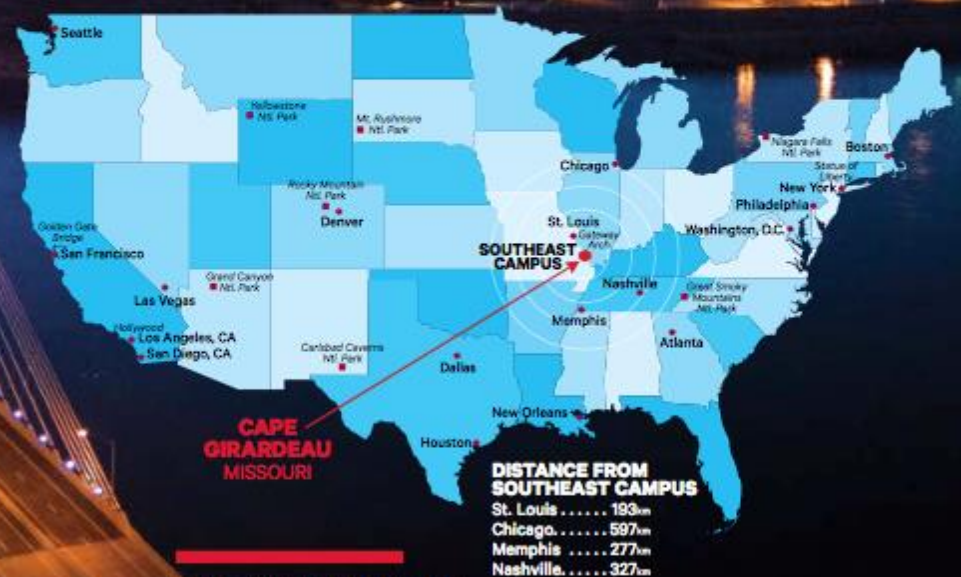
## FACTS ABOUT CAPE GIRARDEAU

- / 500 Local Retailers
- / 130 Local Restaurants
- / 23 Local Parks and Trails
- / 2 Local Hospitals
- / 193 kilometers south of St. Louis
- / Located along the banks of the MISSISSIPPI RIVER — largest river in North America

## CAPE GIRARDEAU TEMPERATURES



**14°C**  
**57°F**  
Local Average  
Temperature



Cape Girardeau named  
**PRETTIEST CITY  
IN MISSOURI**  
by Architectural Digest

# What Courses Do I Take?



<u>Classes</u>	
Fall (F2F)	3
Spring (F2F)	3
Summer (F2F/Online)	1

---

**+** Home Institution Coursework

**=**   
**MBA**

# MBA Degree Options

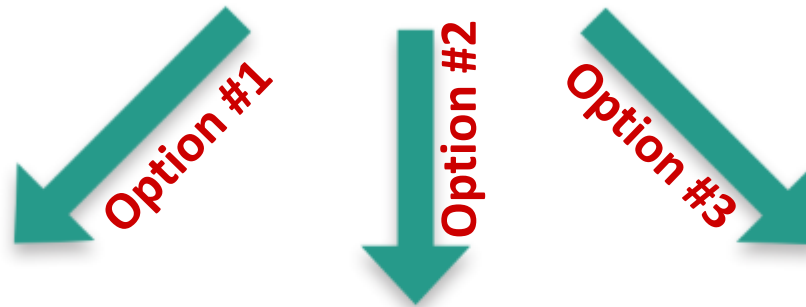
- Current Options:

- Gen Mngt. (OL)
- Health Admin (OL)
- Accounting
- Finance
- Entrepreneurship
- Industrial Mngt.
- Int'l Bus
- Sport Mngt.
- Environ. Mngt.

- Future Options:

- Cyber Security Management
- Business Data Analytics

# How Do I Pay?



 **Regular Tuition**

**Tuition:**

**\$13,640**

Two semesters of full-time status and one summer course

**HCBC**

**GA Position**



1 Position for Partner School Designee

**Tuition: \$13,640 Covered**

+ \$8,600/yr Stipend

+ 20hrs/week Position

**Southeast GA Position**



148 Positions  
Campus Wide

# GMAT Waivers for UCLL Students

- A waiver of the GMAT exam may be considered if the applicant meets any of the following criteria:
  - Has at least **three years of significant professional work experience** with evidence of profit and loss, managerial, or leadership responsibility as determined by the MBA program director.
  - Holds a **terminal degree** (e.g., Ph.D., M.D., J.D., D.D.S.) from an accredited institution deemed appropriate by the MBA program director.
  - Holds a **master's degree** from an accredited institution deemed appropriate by the MBA program director, with a cumulative GPA of at least 3.0 (on a 4-point scale).
  - ***Holds a bachelor's degree or higher from a recognized HCBC international exchange partner institution and receives the endorsement of the partner institution's exchange coordinator and the MBA program director.***
  - Holds a **bachelor's degree from an AACSB accredited program**, with a **GPA of at least 3.50** (overall or in the last 60 hours of college credit).
  - Holds a bachelor's degree from an accredited institution, with a cumulative GPA of 3.0 or better and can provide an acceptable converted GMAT score from **other standardized entrance exams** such as the GRE, MCAT, or LSAT

## Students

the applicant meets

experience with  
responsibility as

from an accredited  
director.  
deemed appropriate by  
at least 3.0 (on a 4-point

HCBC international  
ent of the partner  
n director

program, with a GPA of at  
).  
with a cumulative GPA  
GMAT score from  
AT, or LSAT

# MBA Prerequisite Courses

## All MBA Options Except Accounting (5 Courses)

- Financial Accounting
- Microeconomics
- Finance
- Management Information Systems
- Statistics

or

- Graduate Business Essentials Courses (1 Course - 1-5 Credit hours; depending on need)

## Accounting Option (8 Courses)

- Financial Accounting
- Managerial Accounting
- Financial Accounting and Reporting
- Financial Accounting and Reporting
- Microeconomics
- Finance
- Management Information Systems
- Statistics

# **MBA Admissions Requirements**

- Admissions
  - GPA (3.0)
    - Converted in Flemish System (14)
  - Pre-requisite courses (0-8)

# Questions?

## HCBC MBA Questions:

Website: [semo.edu/mba](http://semo.edu/mba)

Email: [mba@semo.edu](mailto:mba@semo.edu)

## International Services Questions:

Website: [semo.edu/international](http://semo.edu/international)

Email: [international@semo.edu](mailto:international@semo.edu)



Dr. Gillian Nicholls, Director of  
Graduate Business Studies



Dr. Kevin Timlin, Executive Director



Shvetha Gohn, Asst. Dir.  
International Admissions



**Thank you**

# Links

Useful links for prospective international students:

- [Areas of study](#) and [Accreditations](#)
- [International online application](#)
- [Application process](#) (steps)
- [Cost sheet](#) and [International merit scholarships](#)
- [Policies](#) (English proficiency requirement, financial proof, academic transcripts, etc.) and deadlines
- Other [helpful information](#) for prospective students