



Welcome to Worcester Business School!

John Gardener

Head of International Partnerships

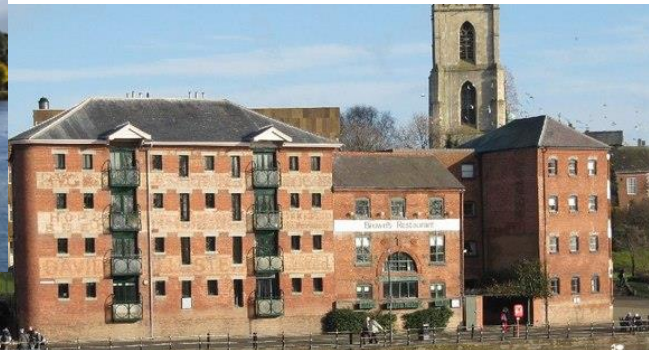
Worcester Business School, Senior Lecturer
in Marketing

Worcester – City & Region



- Small friendly city
- In the Heart of England
- Easy access to London, Birmingham, Bristol and Oxford

City of Worcester



City of Worcester

- <http://www.worcester.ac.uk/discover/about-city-of-worcester.html>
- <https://www.worcester.ac.uk/your-home/virtual-tours.html>
- <https://www.worcester.ac.uk/your-home/city-campus.html>

**An outstanding
University at which to
study Management**

A curriculum that develops knowledge, skills and the ability to think critically, to be reflective, to innovate and to adopt a responsible approach to Management

Outstanding Learning and Teaching

Professionally relevant, integrating maximum Professional Body accreditation and experiential learning

Inspired by contemporary research, scholarship and knowledge transfer

An outstanding University at which to study Management

A global focus, through internationalisation of the curriculum, staff team, student body and opportunities to study abroad

Opportunities to develop an entrepreneurial mind-set and explore business start-up

Outstanding student experience

Outstanding Learning & Teaching

Outstanding Learning
and Teaching

- Qualified staff
- Range of teaching styles
 - Lectures and seminars
 - Tutorials
 - Exercises, games & role plays
 - Individual & group research projects
- Range of assessments

Outstanding Learning & Teaching

Outstanding Learning
and Teaching

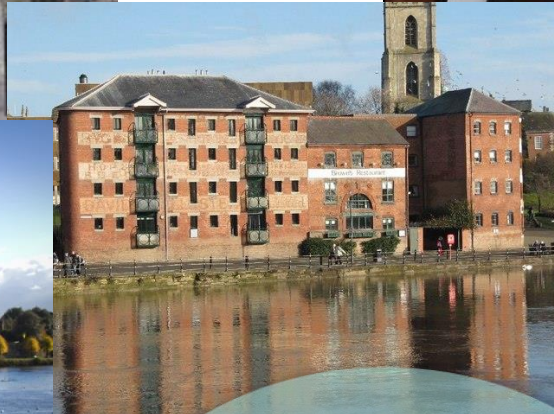


Professionally relevant, integrating maximum Professional Body Accreditation and experiential learning

- Skills development integrated within the curriculum:
 - Application of relevant knowledge
 - Research and problem solving
 - Critical Analysis
 - Communication
 - Numeracy
 - Self-management
 - Interpersonal Skills
 - Team Working
 - Self-awareness
 - Use of IT
 - Enterprise and Creativity

Professionally relevant,
integrating maximum
Professional Body accreditation
and experiential learning

Outstanding student experience



Outstanding
student experience

Outstanding student experience

.....'It was very easy to get settled in Worcester. Very friendly and helpful people. There are a lot of activities and societies with the (international) students to get to know each other.

The lessons are quite different , much more interaction between lector and students in Worcester.

As a huge sports fan, it was also important for me to study in a city that was full of sport.

Last but not least, there are a few nightclubs. They stay open till 4 AM ! '

**Ralf Rademaekers, MSc International
Management 2016**

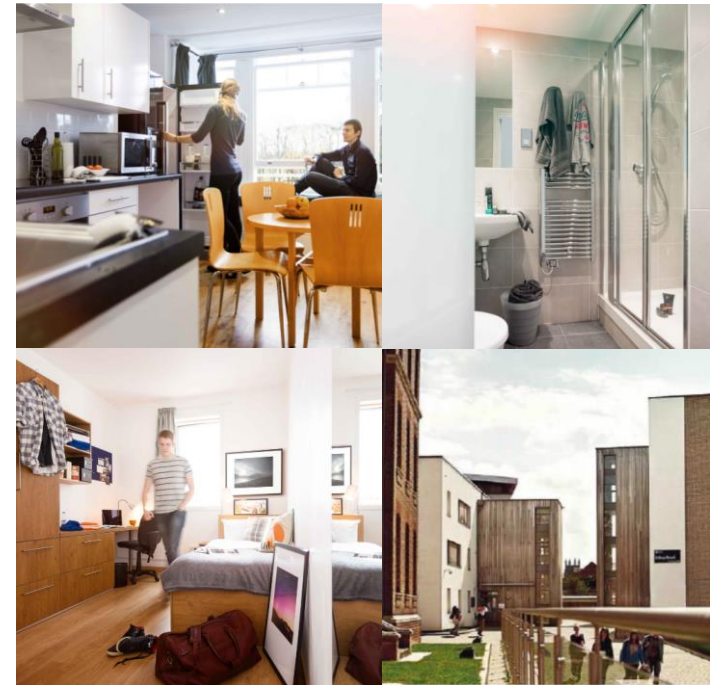
Accommodation & Cost of living

ACCOMMODATION

- Over **1.000 rooms** across our halls (St Johns campus and City campus)
- Rated 5/5 for Housing and in **TOP 25%** of UK Universities for great value accommodation (University Push Guide)
- Free internet access, Wi-Fi, possessions insurance and bills included
- All Halls Self-Catering
- **£105 to £169 per week** (2020)
- Free gym membership

COST OF LIVING

- **£20 - £50 per week** (food, printing, etc.)
- Various grocery shops (**Aldi, Asda, Sainsburys, Coop, M&S**)



Outstanding student experience



- The University Push guide rated the University of Worcester “5/5 for housing and puts us in the top 25% of universities for great value accommodation”

**Outstanding
student experience**

Student Life

THE CITY OF WORCESTER

- Medium sized city = **100.000+ population**
- Students' city = **11.000 students (1.000 international students)**
- Plenty of various **restaurants** and **caffes**, vibrant **night life**
- Surrounded by beautiful **country side** and near by Malvern Hills
- Excellent train links to **Birmingham** (45 min), **Bristol** (1 hr) & **London** (2 hrs)
- Close to various places of interest (**Stratford Upon Avon, Oxford, Cheltenham**, etc.)

CLUBS AND SOCIETIES

More than 40 societies and 40 sport clubs.

- **ACADEMIC** (Mathematics, Geography, Economics, Forensic...)
- **INTEREST** (Harry Potter, Nature, Disney and Pixar, Vegan...)
- **CREATIVE** (Loco, Spotlight Theatre Society, The Voice...)
- **SPORT** (Wheelchair basketball, Frisbee, Cricket, Tennis, Rowing...)



Outstanding student experience

- Outstanding Sports Facilities
 - International standard 'University Arena'
 - 2 floodlit Astroturf pitches
 - Sports pitches
 - 2 Dance Studios with sprung floor
 - 3 Sports & Fitness centres – one at City Campus



**Outstanding
student experience**

ST JOHN'S CAMPUS



- Since 1946
- Sports Centre and outdoor sporting facilities
- Student Union

UNIVERSITY ARENA



- Home ground for Worcester Wolves Basketball Team

CITY CAMPUS



- Business School
- Art School
- En-suite accommodation located on campus

THE HIVE

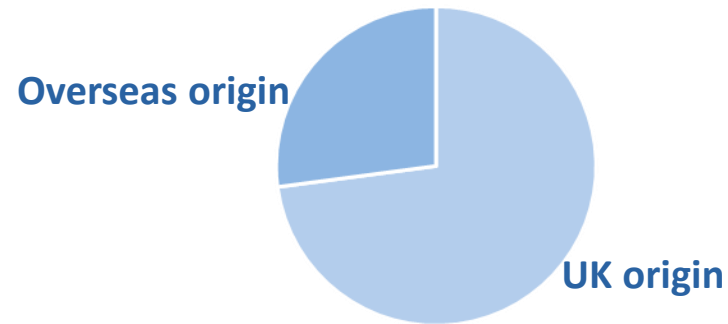


- First public joint University in the UK
- Study and social spaces available to University of Worcester students

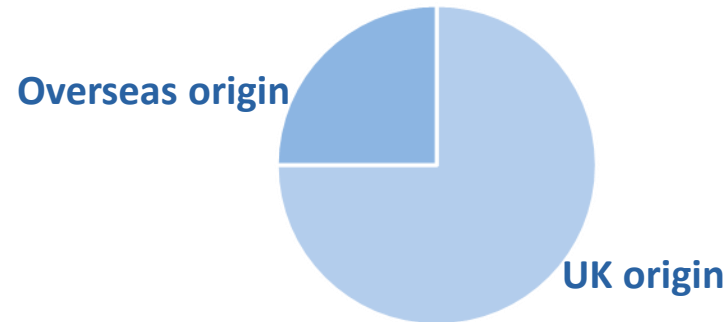
A global focus, through internationalisation of the curriculum, staff team, student body and opportunities to study abroad

A global focus, through internationalisation of the curriculum, staff team, student body and opportunities to study abroad

Business School Staff



Business School Students



A curriculum that develops knowledge, skills and the ability to think critically, to be reflective, to innovate and to adopt a responsible approach to business

A curriculum that develops knowledge, skills and the ability to think critically, to be reflective, to innovate and to adopt a responsible approach to business

MSc International Management

Semester 1

International HRM BMGT4321	Global Strategy BMGT4306	Managing Corporate Reputation BMGT4309	Research Methods BMGT4375
---------------------------------------	-------------------------------------	---	----------------------------------

Semester 2

Managing for Sustainable Futures BMGT4318	Managing across Cultures BMGT4317	2 Options from 1. International Business BMGT4310 2. Coaching & Mentoring BMGT4323 3. Cybersecurity and the Online Market BMGT4315 4. Business Information Systems BMGT4316 5. Corporate Entrepreneurship and innovation BMGT 4305
--	--	--

6 month Internship (Optional/Unaccredited)

Summer / Semester 3: Project

Research Project BMGT4376

MSc International Management

Semester 1

UC Leuven-Limburg Bachelor after Bachelor: Management track,
and International Management track.

Semester 2

Managing for Sustainable Futures BMGT4318	Managing across Cultures BMGT4317	2 Options from <ol style="list-style-type: none">1. International Business BMGT43102. Coaching & Mentoring BMGT43233. Cybersecurity and the Online Market BMGT43154. Business Information Systems BMGT43165. Corporate Entrepreneurship and innovation BMGT4305
6 month Internship (Optional/Unaccredited)		

Summer / Semester 3: Project

Research Project BMGT4376

MBA

International HRM BMGT4321	Global Strategy BMGT4306	Marketing Management BMGT4302	Research Methods BMGT4375
---------------------------------------	-------------------------------------	--	--------------------------------------

Semester 2

Financial Management BMGT4308	Corporate Entrepreneurship and Innovation BMGT4305	<p style="text-align: center;">2 Options from</p> <ol style="list-style-type: none"> 1. Leadership & Change Management BMGT4301 2. Operations & Value Chain Management BMGT4304 3. Cybersecurity and the Online Market BMGT4315 4. Business Information Systems BMGT4316 5. Managing Across Cultures BMGT4317 6. Managing for Sustainable Futures BMGT4318
--	---	--

6 month Internship (Optional/Unaccredited)

Summer / Semester 3: Project

Research Project BMGT4376

MBA

Semester 1

UC Leuven-Limburg Bachelor after Bachelor: Management track and International Management track.

Semester 2

Financial Management BMGT4308	Corporate Entrepreneurship and Innovation BMGT4305	2 Options from <ol style="list-style-type: none">1. Leadership & Change Management BMGT43012. Operations & Value Chain Management BMGT43043. Cybersecurity and the Online Market BMGT43154. Business Information Systems BMGT43165. Managing Across Cultures BMGT43176. Managing for Sustainable Futures BMGT4318
--	---	---

6 month Internship (Optional/Unaccredited)

Summer / Semester 3: Project

Research Project BMGT4376

MSc Human Resource Management

Managing Corporate Reputation BMGT4309 Engaging the Diverse Workforce BMGT4322	Engaging the Diverse Workforce BMGT4322	International HRM BMGT4321	Research Methods BMGT4375
---	--	---	--

Semester 2

Leadership and Change Management BMGT4301	Coaching and Mentoring BMGT4323	2 Options from <ol style="list-style-type: none"> 1. Cybersecurity and the Online Market BMGT4315 2. Business Information Systems BMGT4316 3. Managing Across Cultures BMGT4317 4. Managing for Sustainable Futures BMGT4318 5. Corporate Entrepreneurship and Innovation BMGT4305
--	--	---

6 month Internship (Optional/Unaccredited)

Summer / Semester 3: Project

Research Project BMGT4376

MSc Human Resource Management

Semester 1

UC Leuven-Limburg Bachelor after Bachelor: Human Resource Management track

Semester 2

**Leadership and Change Management
BMGT4301**

**Coaching and Mentoring
BMGT4323**

- 2 Options from
1. Cybersecurity and the Online Market BMGT4315
 2. Business Information Systems BMGT4316
 3. Managing Across Cultures BMGT4317
 4. Managing for Sustainable Futures BMGT4318
 5. Corporate Entrepreneurship and Innovation BMGT4305

6 month Internship (Optional/Unaccredited)

Summer / Semester 3: Project

Research Project BMGT4376

MSc Logistics & Supply Chain Management

Semester 1

Managing the Supply Chain BMGT4311	Project Management Theory & Practice BMGT4314	Global Strategy BMGT4306	Research Methods BMGT4375
---	--	-------------------------------------	--------------------------------------

Semester 2

Operations & Value Chain Management BMGT4304	Contract & Procurement BMGT4312	Business Information Systems BMGT4316	<p>1 Option from</p> <ol style="list-style-type: none"> 1. Cybersecurity and the Online Market BMGT4315 2. Managing Across Cultures BMGT4317 3. Managing for Sustainable Futures BMGT4318 4. International Business BMGT4310
---	--	--	--

6 month Internship (Optional/Unaccredited)

Summer / Semester 3: Project

Research Project BMGT4376

MSc Logistics & Supply Chain Management

Semester 1

UC Leuven-Limburg Bachelor after Bachelor: Global Logistics & Supply Chain

Semester 2

Operations & Value Chain Management BMGT4304	Contract & Procurement BMGT4312	Business Information Systems BMGT4316	1 Option from <ol style="list-style-type: none">1. Cybersecurity and the Online Market BMGT43152. Managing Across Cultures BMGT43173. Managing for Sustainable Futures BMGT43184. International Business BMGT4310
6 month Internship (Optional/Unaccredited)			
Summer / Semester 3: Project			
Research Project BMGT4376			

MSc Marketing

Semester 1

Managing Corporate Reputation BMGT4309	Marketing Communications BMGT4303	Marketing Management BMGT4302	Research Methods BMGT4375
---	--	--	--

Semester 2

International Business BMGT4310	Services Marketing BMGT4307	2 Optional modules from: <ul style="list-style-type: none"> • Cybersecurity and the Online Market BMGT4315 • Managing Across Cultures BMGT4317 • Business Information System BMGT4316 • Managing for Sustainable Futures BMGT4318 • Corporate Entrepreneurship and Innovation BMGT4305
--	--	--

6 month Internship (Optional/Unaccredited)

Summer / Semester 3: Project

Research Project BMGT4376

MSc Marketing

Semester 1

UC Leuven-Limburg Bachelor after Bachelor: Digital Marketing track

Semester 2

**International Business
BMGT4310**

**Services Marketing
BMGT4307**

2 Optional modules from:

- Cybersecurity and the Online Market BMGT4315
- Managing Across Cultures BMGT4317
- Business Information System BMGT4316
- Managing for Sustainable Futures BMGT4318
- Corporate Entrepreneurship and Innovation BMGT4305

6 month Internship (Optional/Unaccredited)

Summer / Semester 3: Project

Research Project BMGT4376

Internships

- Optional
- Up to 6 months in duration
- Normally unpaid
- Using contacts from our successful Bachelor Degree scheme.

Fees and Applying

2023/24

- EU: Approximately £5,500
- Non EU: Approximately £10500

Other fees

Visa application £363

Health Immigration Surcharge £470 per year

Applying

Please email John Gardener at j.gardener@worc.ac.uk

for an application form

Thank You! Any Questions?

Contact Details:

John Gardener

**Head of International
Partnerships**

Worcester Business School
University of Worcester
Castle Street
Worcester
WR1 3AS

j.gardener@worc.ac.uk
+44 (0) 1905 855357

**An outstanding
University at which to
study Management**

Contact Details:

Dr Laila Kasem

Course Leader

Worcester Business School
University of Worcester
Castle Street
Worcester
WR1 3AS

l.kasem@worc.ac.uk
+44 (0) 1905 542210

