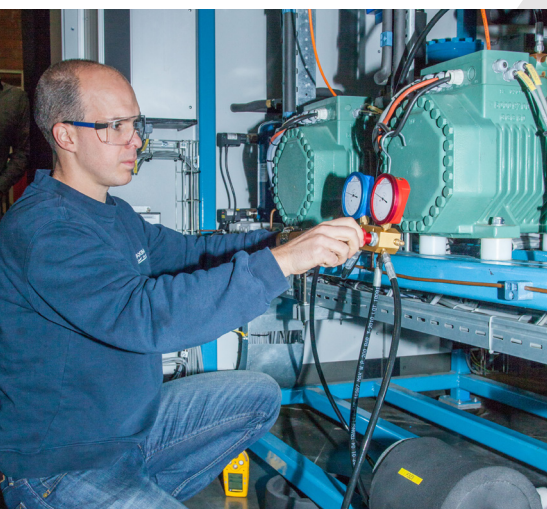
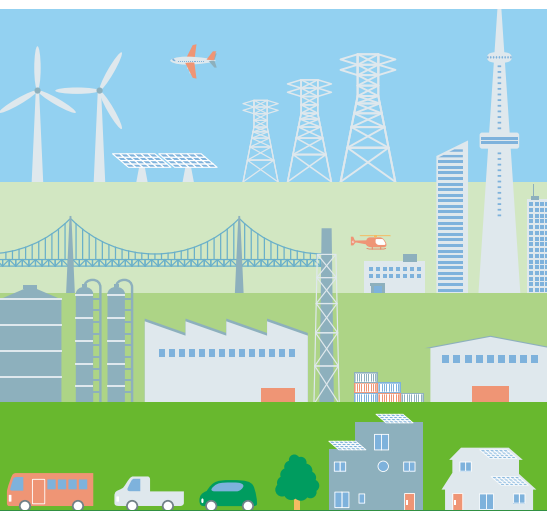


Services, contract research
and custom-made
trainings are possible!



UC Leuven
Limburg
MOVING MINDS

QUADRI
RESEARCH AND
INNOVATION

CENTRE OF EXPERTISE ENERGY

EN

The centre of expertise Energy within the group Management and Technology focuses on research, services and the dissemination of research results to education with regards to **new energy technologies**, such as:

- **Electrical Energy:** the centre of expertise Energy disposes of a functional smart grid that can be used for carrying out simulation exercises, as well as for testing different combinations of the applications of sustainable energy. Also, the centre's expertise stretches to conserving energy in battery systems and hydrogen gas. For industrial networks, Energy has a certified education and services centre for ProfiBus and ProfiNet and it stakes on European Energy Management trainings. Energy collaborates with ACRO (KU Leuven) on aspects of vision, robotics and automation on an industrial scale.
- **Thermal Energy:** at the laboratory in Houthalen that is used for experimenting with and testing cooling techniques, experts pool expertise in cooling, as well as heat pump technologies and geothermal energy. It focuses on the use of natural cooling systems and energy-saving technologies. It is also a licensed testing centre at which it is possible to obtain a certificate in cooling techniques and it is a unique training centre for natural cooling systems with several test rigs, ranging from classical applications to the most innovative cooling systems. Finally, it organises trainings for air-condition experts.
- **Sustainable Transport:** Energy also houses expertise in "charging infrastructure", "Balance Of System", "hydrogen-applications" and "E-mobility". In this regard, there was a cooperation with the pilot project "Volt-Air".

Not only companies in the HVAC sector or the cleantech industry are the target group of this centre of expertise, but every company that wants to step up its use of sustainable energy. Energy develops implementable solutions on demand.

www.ucll.be/energy

Contact:

Thomas Vanhove (teamleader) ▪ thomas.vanhove@ucll.be ▪ Tel: +32 11 180 300

Sofie Ignoul (head of research) ▪ sofie.ignoul@ucll.be ▪ Tel: +32 11 180 300

UC Leuven-Limburg, Campus Diepenbeek, Agoralaan building B/3, B-3590 Diepenbeek

Robrecht Van Goolen (head of services) ▪ robrecht.vangoolen@ucll.be ▪ Tel: +32 16 375 347

UC Leuven-Limburg, Campus Proximus, Geldenaaksebaan 335, B-3001 Heverlee

MEMBER OF
**ASSOCIATIE
KU LEUVEN**